



INVESTMENT HAVEN OF THE EAST.

TERENGGANU, MALAYSIA.



WELCOME TO TERENGGANU

Spurred by continuous innovation across various industries, Terengganu continues to be an ever-evolving state in the hearts of Malaysia, reflecting the region's future and ambition.

Invest Terengganu is a one-stop agency that provides information and facilitates assistance to potential and existing investors.

OBJECTIVES

- Focused on addressing socio-economic issues
- Raising household incomes through new business opportunities
- Developing entrepreneurs
- Increasing economic activities in both urban and rural areas particularly in the State of Terengganu.

VISION & MISSION



Part of the nation's leading investment hub and solution provider



Conducive investment-friendly environment



Explore new investments

1974

**Discovery
offshore oil
& gas back.**

**Significant change to
its economic, industrial,
and social structure
landscape.**

**IDEAL
GATEWAY
TO MALAYSIA**

OUR MESSAGES

1

Opening up new business opportunities

2

Increasing income levels and job creations

3

Improving the quality of life

4

Modernising quality infrastructure & lifestyle

5

Creating a First-world and IT-savvy mentality

6

Diversifying economy as per-economic clusters defined



WHY INVEST IN TERENGGANU

"Your investment
destiny starts here,
Terengganu.
We will transform
your investment
into reality"

The Chief Minister of Terengganu



Strategic
Shipping Route



Rich in
Natural
Resources



Attractive
Incentives



Good
Infrastructure



Lower Cost
of Doing
Business



Oil & Gas
origin of the
Peninsular
Malaysia



Political
Stability



Talented
Workforce



Readiness
of Supply
Chain

INCENTIVES

INCENTIVES BY MIDA

Major Incentives

- Pioneer Status – Income tax exemption ranging from 70% to 100% for a period of 5 or 10 years
- Investment Tax Allowance – 60% or 100% on qualifying capital expenditure for 5 years
- Reinvestment Allowance – 60% on qualifying capital expenditure for 15 consecutive years
- Import Duty Exemption – for raw materials /components and machinery & equipment

**Scan the QR code for more info.*



INCENTIVES BY ECERDC

Major Incentives

- Income tax exemption of 70% or 100% for 10 or 15 years commencing from the year company derives statutory income.
- Investment tax allowance equivalent to 100% of qualifying capital expenditure for 5 years.
- Stamp duty exemption on land or building acquired for approved project/activity.

**Scan the QR code for more info.*



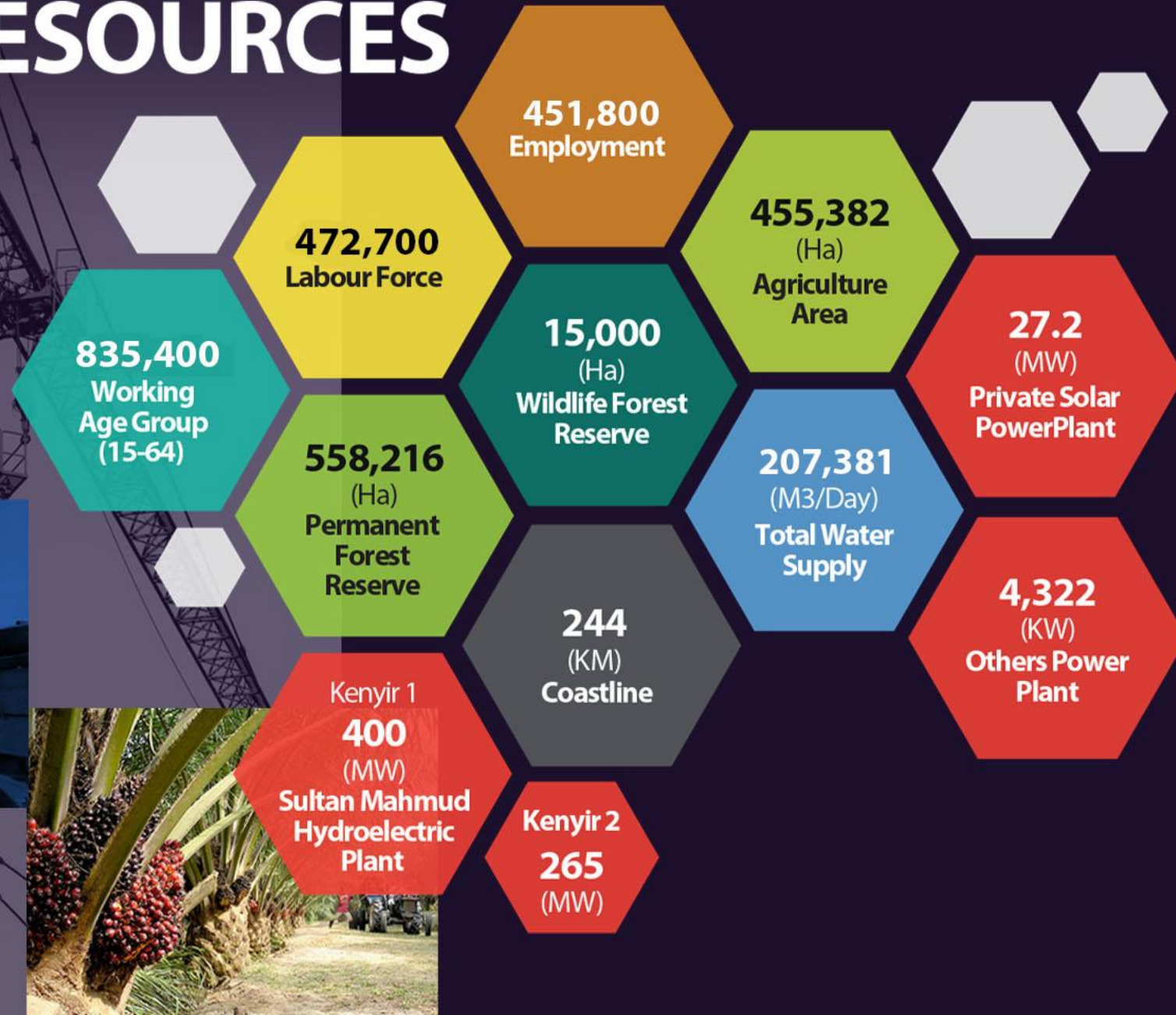
GDP BY ECONOMIC ACTIVITIES,

AT CONSTANT 2015 PRICES



Estimated as of 2021

RESOURCES



LABOUR FORCE PARTICIPANT

835.4
Working Age
Group (15-64)

472.7
Labour Force

451.8
Number of Employed
Persons ('000)

20.9
Number of Unemployed
Persons ('000)

56.6
Labour Force
Participation Rate (%)

4.4
Unemployment
Rate (%)

362.7
External Labour Force ('000)

Estimated as of 2021



EAST COAST RAILWAY LINK (ECRL)

3.5 hours from Kuala Terengganu to Kuala Lumpur with 7 stations including freed stations to support the economy of Terengganu



AIRPORTS

12 flights to-and-fro Kuala Lumpur every single day

LOGISTIC SUPPORT



EAST COAST HIGHWAY

358 kilometres of dual-carriageways running from Kuala Terengganu to Gombak that takes only a 4-hour drive



PORT

Terengganu has the deepest natural water depth port in Kemaman with 648 metre quay length and maximum draught of 18 metres

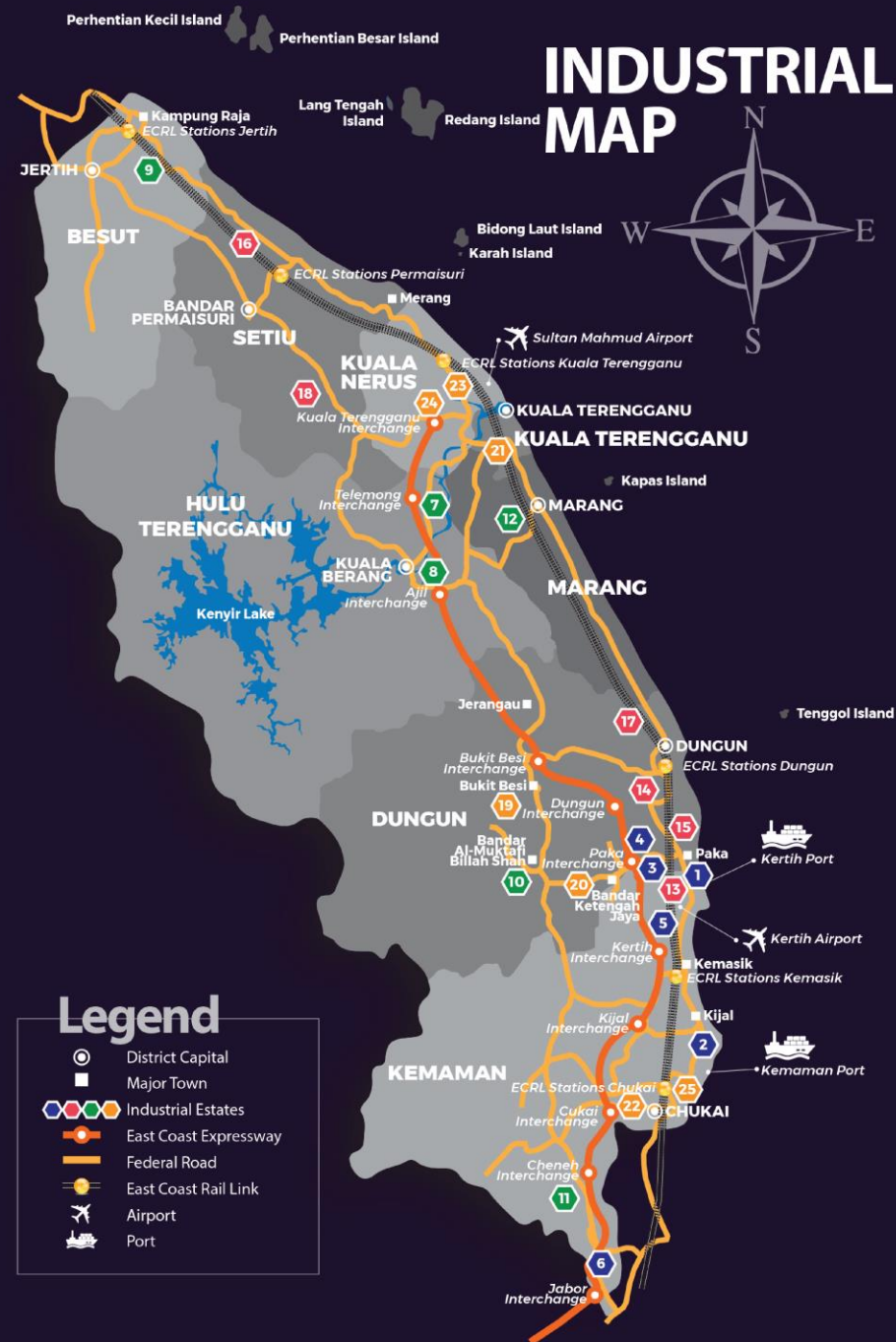
INDUSTRIAL FACILITIES

Heavy Industries, Biotechnology, Advanced Industries, Oil & Gas Based industries

1. Kertih Industrial Petroleum Complex
2. Teluk Kalong Industrial Estate
3. Lot Q, Kertih Biopolymer Park(KBP)
4. Santong Industrial Estate
5. Lot P, Kertih Industrial Estate
6. Perasing Industrial Estate

Support Services

13. Bukit Labuhan Industrial Estate
14. Batu 7 Industrial Estate
15. Char-Char / Paka Industrial Estate
16. Saujana Industrial Estate
17. Pulau Serai Industrial Estate
18. Sungai Bari Industrial Estate



25
INDUSTRIAL
ESTATES

Wood & Construction Based Industries

7. Wakaf Tapai Industrial Estate
8. Ajil Industrial Estate
9. Gong Medang Industrial Estate
10. Al-Muktafi Billah Shah Industrial Estate
11. Cheneh Industrial Estate
12. Bukit Kor Industrial Estate

SME/ Other Industries

19. Bukit Basi Industrial Estate
20. Ketengah Jaya Industrial Estate
21. Chendering Industrial Estate
22. Mak Lagam Industrial Estate
23. Gong Badak Industrial Estate
24. Batu Rikit Industrial Estate
25. Jakar Industrial Estate

CLUSTERS



Tourism

- Urban Tourism: Kuala Terengganu as the main gateway to Tourism Industry.
- Eco and Island Tourism: the strength of Terengganu Tourism Industry.
- Cultural Heritage Tourism: highlighting culture to the world.
- 202 Tourism Products including new and existing, providing a huge potential for investment in the Tourism Industry.



Manufacturing, Oil & Gas

- Oil and Gas industry focuses onshore and offshore activities-upstream, midstream and downstream.
- Maritime/Marine Industry focuses on shipbuilding, maintenance, repair and overhaul.
- The Timber and Wood-based industry serves as a foundation for future manufacturing needs.
- The Industry and Infrastructure Development is based on the IR 4.0.



Biotechnology

- The Biotech Industry focuses on the production of bio-based product renewable waste (feedstock, biomass, agriculture and industrial waste)
- Agriculture Biotechnology involves aquaculture and agriculture projects and at the same time strengthening the supply chain in Biotechnology
- Bio-medical (Pharmaceutical and Wellness)



Communications, Content, Infrastructure & Emerging Technologies

- Content Factory: focuses on Educational Edutainment and Family Entertainment
- Digital Terengganu: an ecosystem that will be a beacon to entice local, national and global business opportunities and investors to start their business.
- Commercialisation of Emerging Technology: Terengganu as a centre of excellence for simulation, visualization, non-destructive testing, as well as data management and analytics





SHOPPING

The mall is expected to attract investors and increase the economic status of the state. It is said that the development is expected to provide about 3,000 employment opportunities to the people of Terengganu. Apart from the amenities present in the mall, there are a multitude of amenities like eating establishments, supermarkets, convenience stores, workshops, banks and more in close proximity as Kuala Terengganu is a mature township.

ACCOMMODATION

Located along Malaysia's east coast, Terengganu is one of Malaysia's most popular destinations largely due to the fact that the state plays host to the beautiful and serene Perhentian Islands and Redang Island. A rich symphony of turtle-dotted blue waters, even bluer skies and lush vegetation, Terengganu is one of Malaysia's most tourist visited states owing to its plethora of diving and snorkeling opportunities – don't dismiss mainland from your explorations as it is one of the country's richest-in-Malay-culture regions. Terengganu's sandy beaches remain deserted for the most part during the weekdays and the waves are some of the best in Malaysia.

AMENITIES AND ATTRACTIONS.

AMENITIES AND ATTRACTIONS.

DRAWBRIDGE

Terengganu Tower Drawbridge is a part of the projects for the East Coast Economic Region (ECER). It is 638 metres in length and the first drawbridge built in Malaysia and Southeast Asia. Its 76-metre bascule can be raised and lowered using counterweights to allow for vessels to pass underneath it. Both towers will each house an exclusive restaurant with an observation tower and a hall. The public will be able to rent the halls for official functions, exhibitions or wedding ceremony.

GOLF CLUB

Along the coast of Terengganu is a string of fishing villages, different from the golf courses of Terengganu where colourful handmade batik can often be found drying in the shade of coconut trees, and a variety of resorts. Terengganu golf courses for Malaysia golf vacationers is perhaps most famous for its beautiful coral islands of Redang and Perhentian, situated in protected marine parks, and Kapas.



INVEST TERENGGANU

We always welcome your enquiry.

TERENGGANU STATE ECONOMIC PLANNING UNIT
The Office of the Secretary of the state of Terengganu
12th & 13th Floor, Wisma Darul Iman
20503 Kuala Terengganu, Malaysia

Tel : 09-623 1957 Fax: 09-623 4278
Email : invest.terengganu@gmail.com

